

Fig. 1: Hair in Hair Follicle

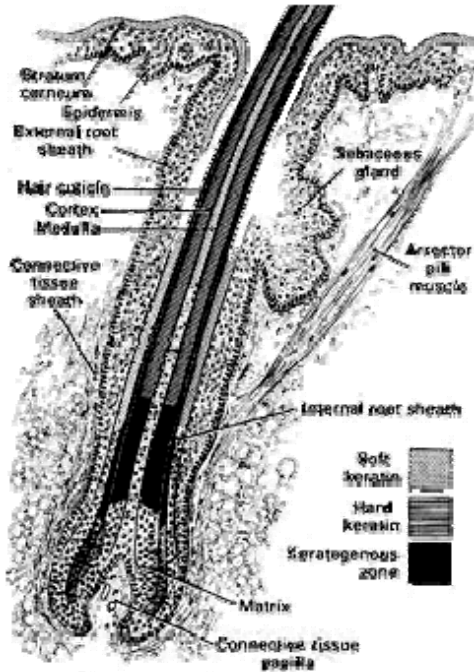


Fig. 2: Hair Diagram

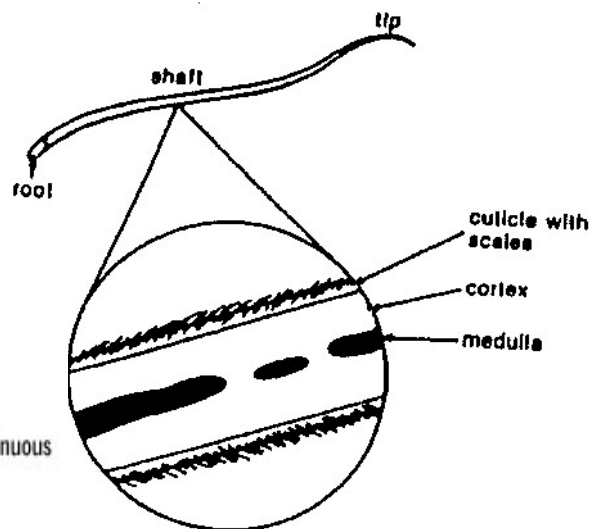
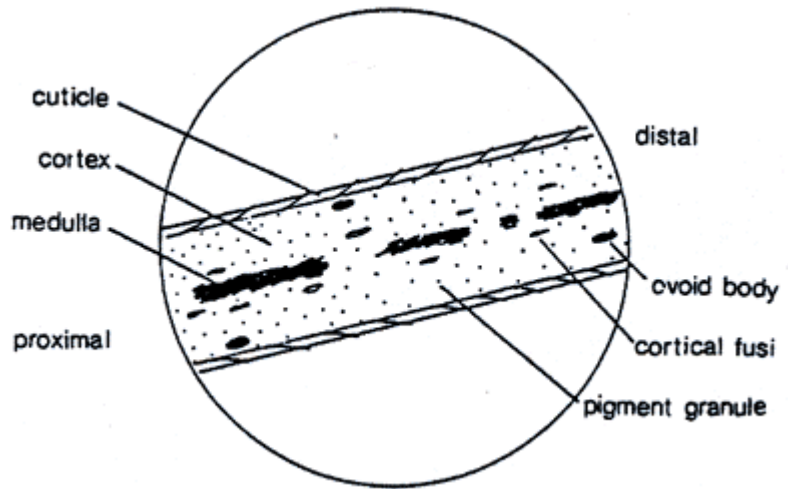
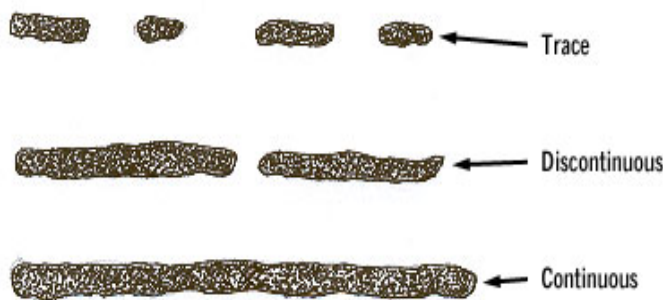
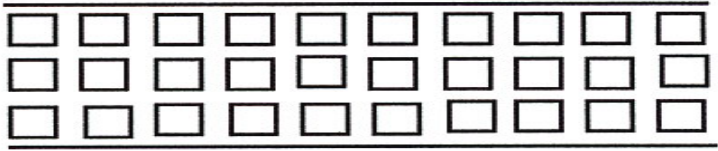
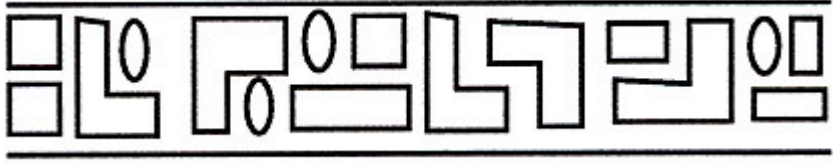
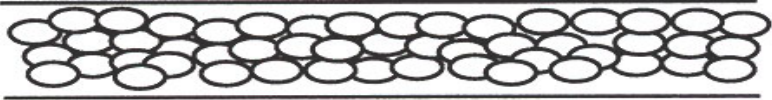
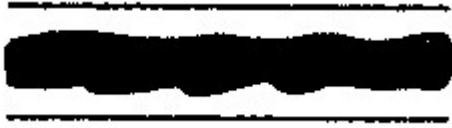








Fig 3: Diagrams of Medullas

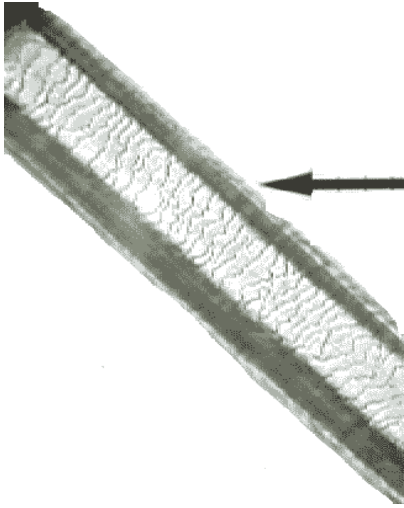


MEDULLA	The medulla is the core of a hair that is not always present. There are several types and patterns.
TYPES:	
Continuous	
Intermittent or interrupted--even breaks in the medulla	
Fragmented--breaks that are unevenly spaced	
Absent	
PATTERNS:	
Uniserial--small blocks in a row	

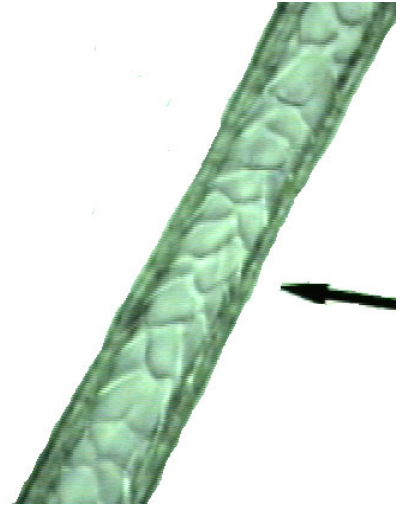
<p>Multiserial--several rows of blocks across</p>	
<p>Vacuolated--uneven pattern</p>	
<p>Lattice--circular patterns</p>	
<p>Amorphous--without a specific pattern</p>	

CUTICLE SCALES

Mosaic	Pectinate	Imbricate	Petal	Diamond Petal	Chevron
					



HUMAN CUTICLE SCALES



DOG CUTICLE SCALES

